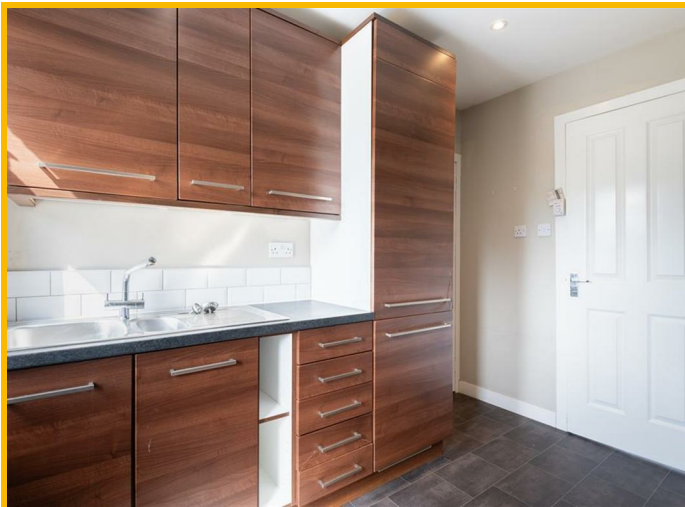




62 Den Walk, Buckhaven, Leven, KY8 3LH

Offers Over £80,000

Spacious 2 Bedroom Ground Floor Apartment in MOVE IN CONDITION on a CORNER PLOT offering one-level living with an EXTENSIVE FRONT GARDEN. Located close to the Local Primary School with a short drive to Cameron Bridge Train Station with direct links to Edinburgh, and to Leven for the Fife Coastal Path, Beaches, Golf Courses, and Train Station. Accommodation: Hall, lounge, kitchen, 2 bedrooms and a bathroom. DG. GCH. Gardens. PERSONAL PROPERTY TOUR available online.



DIRECTIONS

Please contact agent for further information.

HALL

Access is via a timber door with an opaque glazed inlet leading into the hallway through the vestibule. Cupboard provides storage space. Radiator. Carpeted.

LOUNGE

14'11" x 12'7" (4.56m x 3.84m)

Spacious lounge with a double-glazed window to the front overlooking the garden. Radiator. Carpeted. Doorway to the kitchen.

KITCHEN

9'11" x 9'4" (3.04m x 2.85m)

Fitted kitchen comprising: Wall mounted, floor standing units with contrasting worktops and tiled splashbacks. Integrated appliances include an electric hob, extractor fan, eye level oven, microwave, and fridge/freezer. Double-glazed window to the rear. Wall mounted gas central heating condensing combi boiler. Cupboard provides a utility space for a freestanding plumbed appliance. Radiator. Vinyl flooring. Double-glazed UPVC door provides access to the rear garden.

BEDROOM 1

10'11" x 10'5" (3.34m x 3.19m)

Spacious double bedroom with a double-glazed window to the front overlooking the garden. Coving. Radiator. Carpeted.

BEDROOM 2

10'5" x 10'0" (3.20m x 3.05m)

Additional double bedroom with a double-glazed window to the rear overlooking the garden. Coving. Radiator. Carpeted.

BATHROOM

6'11" x 6'8" (2.13m x 2.05m)

3-piece suite comprising: W.C, wash hand basin and a bath with a pivot screen and a thermostatic control shower above. Opaque double-glazed window to the rear. Partially tiled. Radiator. Vinyl flooring.

GARDEN

The front garden is an extensive garden laid to lawn with borders containing established plants and shrubs with a paved path leading to the front entrance. The rear garden is again laid to lawn with a paved patio area ideal for garden furniture to relax in the sun. A timber shed provides outdoor storage space.

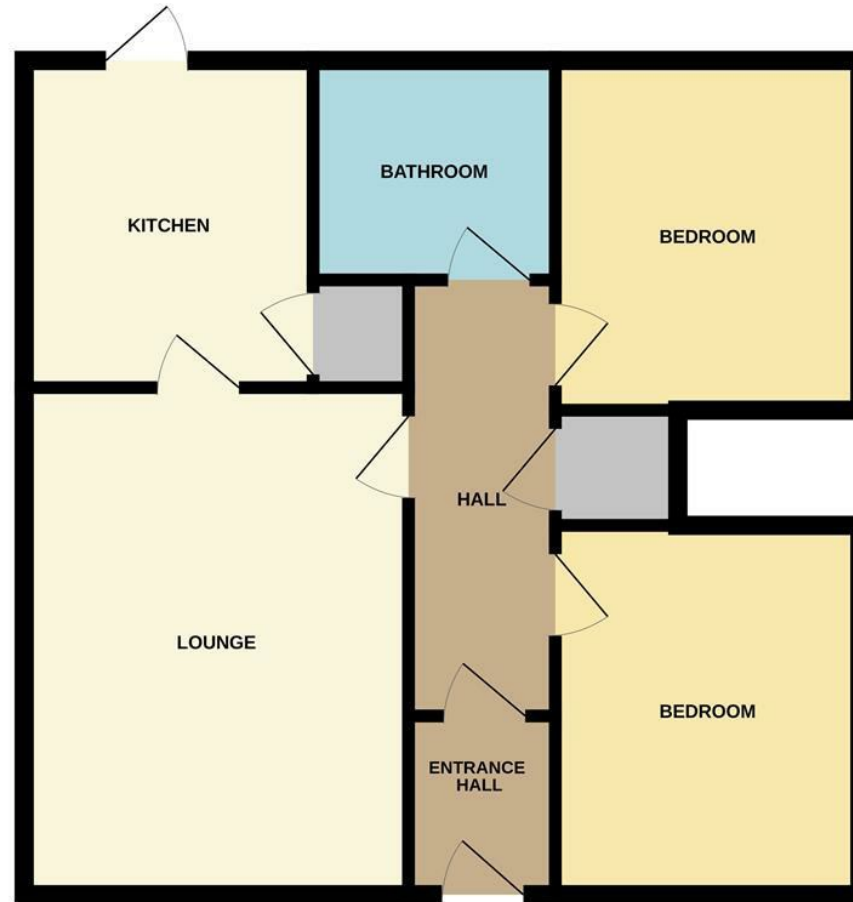
AGENTS NOTES

Please note that all room sizes are measured approximately to the widest points.

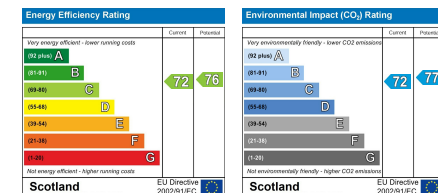




GROUND FLOOR



Whilst every attempt has been made to ensure the accuracy of the floorplan contained here, measurements of doors, windows, rooms and any other items are approximate and no responsibility is taken for any error, omission or mis-statement. This plan is for illustrative purposes only and should be used as such by any prospective purchaser. The services, systems and appliances shown have not been tested and no guarantee as to their operability or efficiency can be given.
Made with Metropix ©2025



Under the Property Misdescription Act 1991 we endeavour to make our sales details accurate and reliable but they should not be relied upon as statements or representations of fact and they do not constitute any part of an offer of contract. The seller does not make any representations to give any warranty in relation to the property and we have no authority to do so on behalf of the seller. Services, fittings and equipment referred to in the sales details have not been tested (unless otherwise stated) and no warranty can be given as to their condition. We strongly recommend that all the information which we provide about the property is verified by yourself or your advisers. Under the Estate Agency Act 1991 you will be required to give us financial information in order to verify your financial position before we can recommend any offer to the vendor.