



37 Huntly Drive, Glenrothes, Fife, KY6 2HS

£700 PCM



37 Huntly Drive, Glenrothes, Fife, KY6 2HS

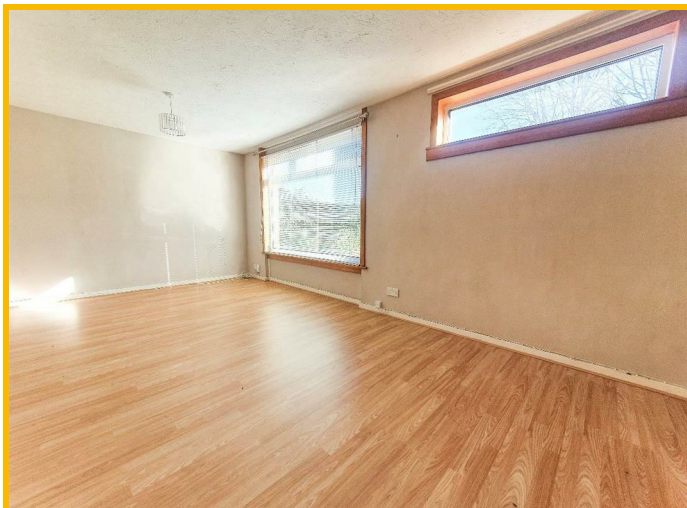
Spacious 2 Bedroom End Terraced Villa situated in a sought after residential area of Glenrothes. Located within short distance of the Kingdom shopping centre, bus station and local primary and secondary schools. Accommodation: Entrance hall, SPACIOUS lounge, kitchen with cooker, washing machine and fridge freezer. 2 double bedrooms, bathroom with shower above the bath. Entrance vestibule. On Street parking. Front and rear garden. DG. GCH. Pets considered with a larger deposit.

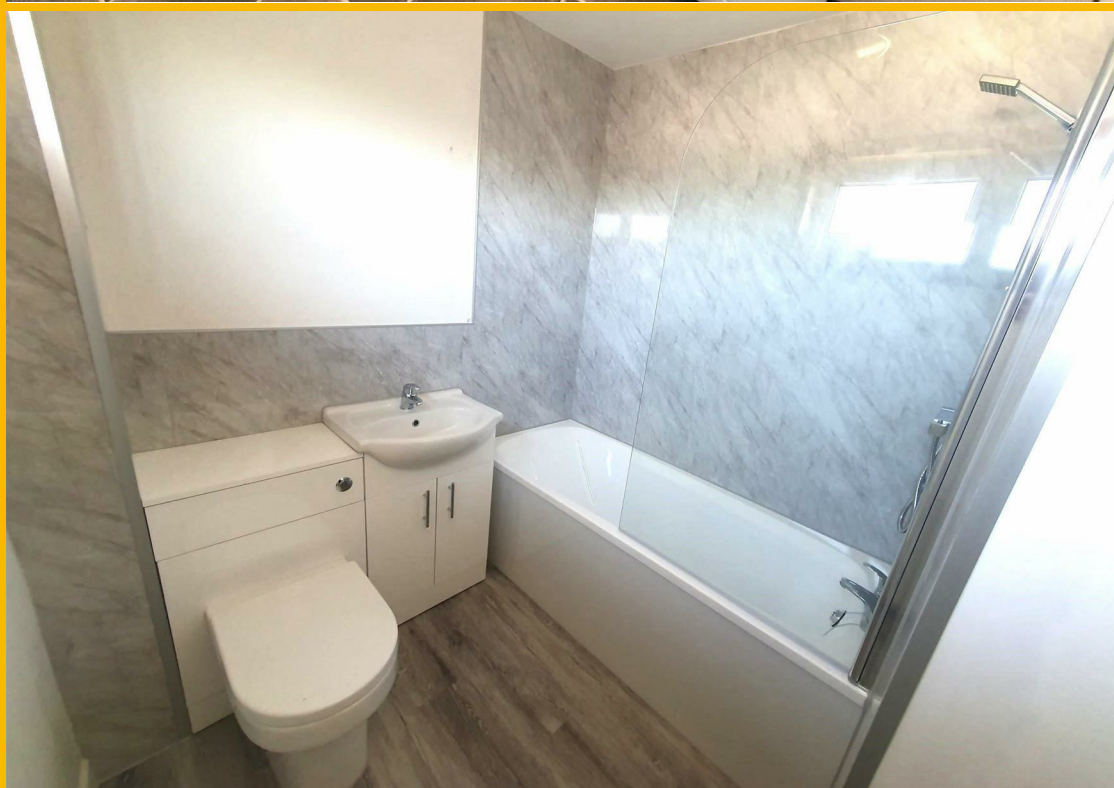
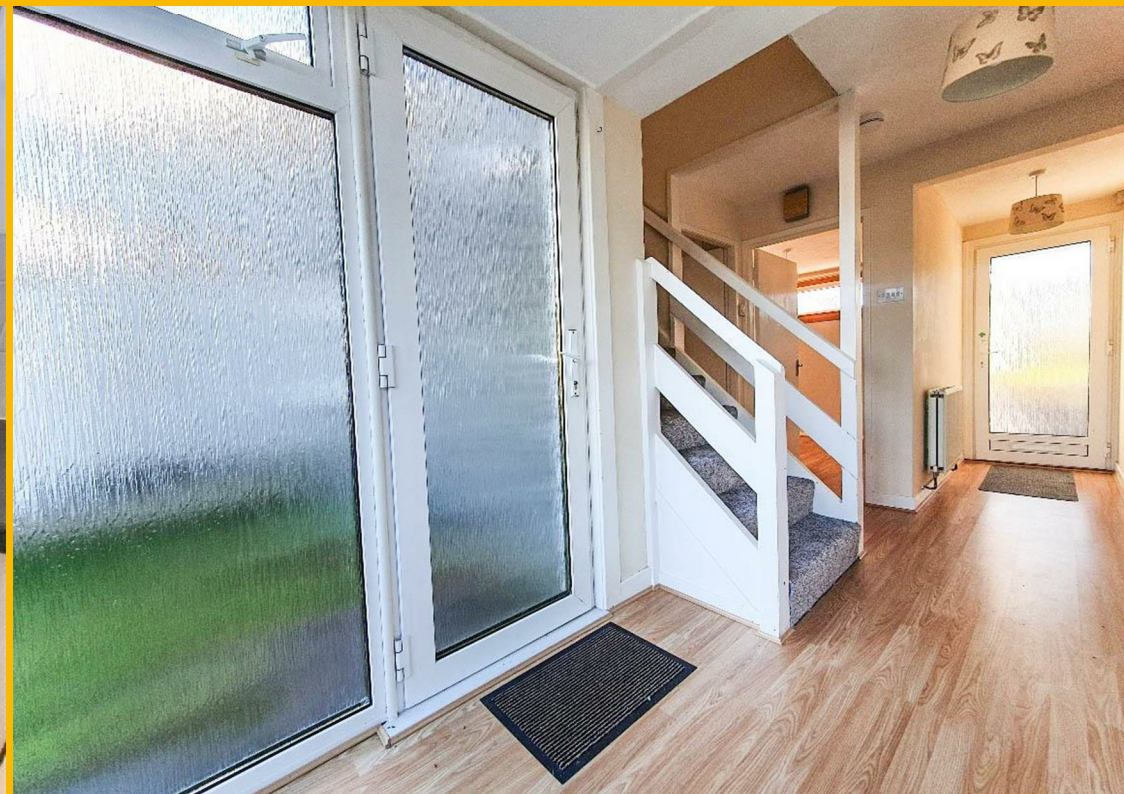
EPC RATING: D

COUNCIL TAX BAND: A

LETTING AGENT REGISTRATION NUMBER: LARN2003004

LANDLORD REGISTRATION NUMBER: 1405528/250/21042







Under the Property Misdescription Act 1991 we endeavour to make our sales details accurate and reliable but they should not be relied upon as statements or representations of fact and they do not constitute any part of an offer of contract. The seller does not make any representations to give any warranty in relation to the property and we have no authority to do so on behalf of the seller. Services, fittings and equipment referred to in the sales details have not been tested (unless otherwise stated) and no warranty can be given as to their condition. We strongly recommend that all the information which we provide about the property is verified by yourself or your advisers. Under the Estate Agency Act 1991 you will be required to give us financial information in order to verify your financial position before we can recommend any offer to the vendor.

Email: info@fifeproperties.co.uk
www.fifeproperties.co.uk

